



EXAMINATION NO.: _____

THE MALAWI NATIONAL EXAMINATIONS BOARD

2024 MALAWI SCHOOL CERTIFICATE OF EDUCATION EXAMINATION

AGRICULTURE

Subject Number: M012/I

Tuesday, 9 July

Time Allowed: 2 hours

8:00 – 10:00 am

PAPER I

(100 marks)

Theory

Instructions

1. This paper contains 12 printed pages. Please check.
2. This paper has **two** sections, A and B. Section A has **ten** questions and Section B has **three** questions.
3. Answer **all** questions in the spaces provided.
4. Write your **Examination Number** on all pages in the spaces provided.
5. In the **Table** provided on this page, **tick** against the question number you have answered.
6. At the end of the examination, hand in your paper to the invigilator.

Question Number	Tick if answered	Do not write in these columns	
1			
2			
3			
4			
5			
6		.	
7			
8			
9			
10			
11			
12			
13			



© 2024 MANEB

Turn over

Section A (70 marks)



Answer **all** questions in this section in the spaces provided.

1. a. Mention any **two** types of farm machinery.

(2 marks)

- b. State the **two** forms of soil degradation.

(2 marks)

- c. Explain any **two** limitations of bush fallowing as a cropping system.

(4 marks)

2. a. Mention any **two** activities which are carried out when coming up with a complete budget.

(2 marks)

- b. A nanny gave birth to a male kid on 1st June 2023.

- (i) State a month in 2024 in which the kid would be ready for mating.

(1 mark)

- (ii) Give a reason for the answer in b (i).

(1 mark)

Continued/...

2. (Continued)

- c. Describe any **one** way in which crop rotation control pests in crops.

(2 marks)

3. a. State any **two** reasons for culling in goat production.

(2 marks)

- b. **Figure 1** is a diagram showing a diseased mango fruit.



Figure 1

- (i) Give the name of the disease that affected the mango fruit.

(1 mark)

- (ii) Give **two** ways of controlling the disease.

(2 marks)

- c. Describe any **one** aim of crop improvement.

(2 marks)



Continued/...

4. Figure 2 are diagrams showing farmers cultivating land.

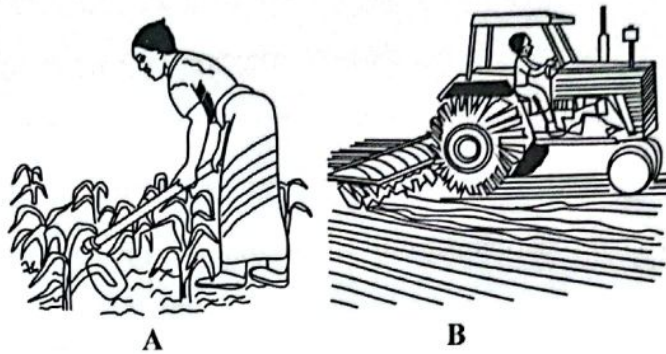


Figure 2

- a. Describe **one** effect of the gender bias illustrated in the diagrams.

(2 marks)

- b. Name the sources of power used in the figure.

A _____

B _____

(2 marks)

- c. Describe any **two** limitations of the source of power used in A.

(4 marks)



Continued/...

5. a. State any **two** factors to consider when mechanising a farm.

(2 marks)

- b. Explain any **two** factors to consider when choosing a site for mushroom production.

(4 marks)

6. a. State any **two** principles that are followed when designing crop rotation.

(2 marks)

- b. Explain any **two** reasons for not mostly using biogas as a source of fuel on the farm.

(4 marks)

- c. Explain any **one** way in which use of heavy machinery would destroy soil structure.

(2 marks)



Continued/...

7. a. State any **two** economic principles in farm business decision making.

(2 marks)

- b. **Figure 3** is a diagram showing position of a foetus in a uterus of a cow.

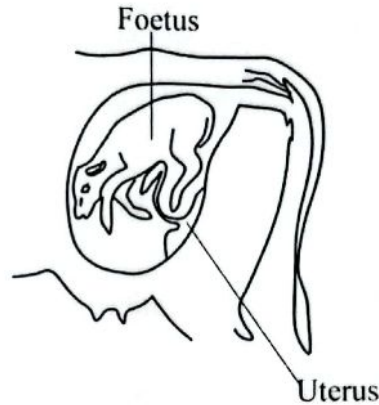


Figure 3

- (i) Identify the foetus presentation in the uterus.

(1 mark)

- (ii) Give **two** recommendations that should be given to a farmer who owns such a cow.

(2 marks)

- c. Explain any **one** way in which growth habit of pasture affect its seed rate.

(2 marks)

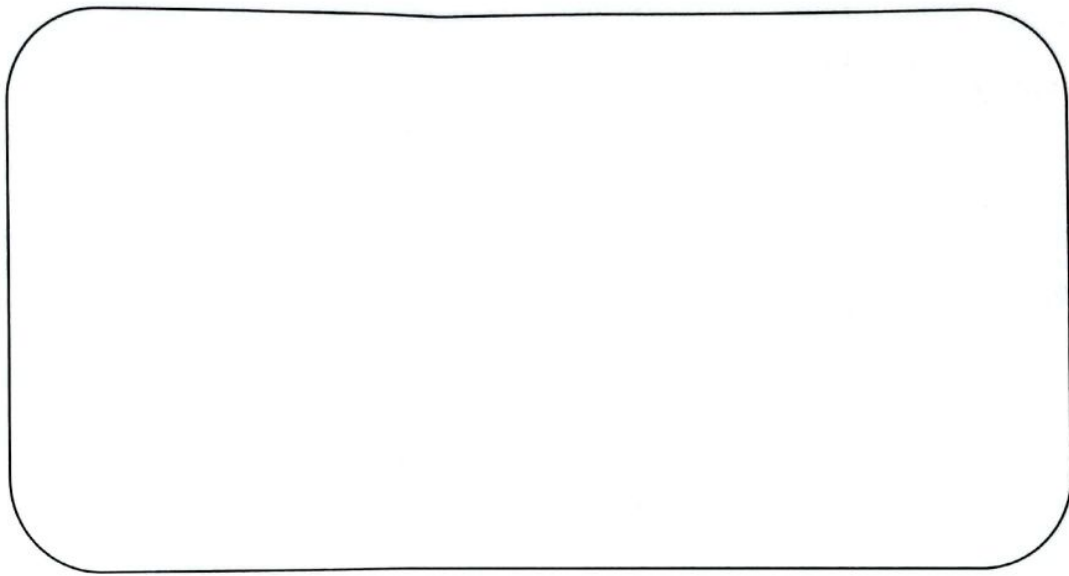


Continued/...

8. a. State any **two** advantages of stall feeding in cattle production.

(2 marks)

- b. A farmer plans to calve his cow in the month of December, 2024.
In which month should the farmer service his cow? Show your working.



(2 marks)

- c. Describe any **one** way in which a bloat occurs in ruminant animals.

(2 marks)



Continued/...

9. The Table below shows information of price elasticity of demand on two crop produce on the market.

Crop produce	Price elasticity of demand	% change in price
X	0.3	33
Y	2.0	50

- a. Calculate the percentage change in demand for the two crop produce.

X

(2 marks)

Y

(2 marks)

- b. Identify a crop which could give a high profit to the farmer.

_____ (1 mark)

- c. Give a reason for the answer in (b).

(2 marks)



Continued/...

10. a. Define the term 'cation exchange capacity'.

(1 mark)

- b. Mention any **one** way in which each of the following steps of processing maize are important:

- (i) shelling

(1 mark)

- (ii) drying the grain

(1 mark)

- c. Explain any **two** ways in which processing of mushroom is important to ensure food security.

(4 marks)



Continued/...

This image shows a single sheet of white paper with horizontal ruling lines. The lines are evenly spaced and run across the width of the page. There are approximately 20 lines visible. The paper has a slightly textured appearance and some minor discoloration or shadows, particularly along the edges and in the center fold area.



